



ART BAY

PROJECT BRIEF

# EAST GROUND FLOOR AMENITIES PLAN

- ① ACCESS TO PARKING LEVELS
- ② EV CHARGING STATION
- ③ PARKING FOR PEOPLE OF DETERMINATION
- ④ BICYCLE PARKING
- ⑤ LIFT LOBBY
- ⑥ ACCESS TO PROMENADE



EAST  
FIRST FLOOR  
AMENITIES PLAN

- ① ACCESS TO PARKING LEVELS
- ② ACCESS TO GROUND FLOOR PARKING
- ③ EV CHARGING STATION
- ④ PARKING FOR PEOPLE OF DETERMINATION
- ⑤ BICYCLE PARKING
- ⑥ LIFT LOBBY



WEST  
GROUND FLOOR  
AMENITIES PLAN

- ① ACCESS TO PARKING LEVELS
- ② EV CHARGING STATION
- ③ PARKING FOR PEOPLE OF DETERMINATION
- ④ BICYCLE PARKING
- ⑤ LIFT LOBBY
- ⑥ ACCESS TO PROMENADE



**WEST  
FIRST FLOOR  
AMENITIES PLAN**

- ① ACCESS TO PARKING LEVELS
- ② ACCESS TO GROUND FLOOR PARKING
- ③ EV CHARGING STATION
- ④ PARKING FOR PEOPLE OF DETERMINATION
- ⑤ BICYCLE PARKING
- ⑥ LIFT LOBBY
- ⑦ ACCESS TO PROMENADE



HOT YOGA  
STUDIO



CHANGE  
ROOM





ELLINGTON VILLAGE ←  
WORK STATION ↓  
PLAY AREA →

YOUTH  
HUB



POOL  
DECK



THE  
COURTYARD

**EAST  
SECOND FLOOR  
AMENITIES PLAN**

- |  |                            |
|--|----------------------------|
| ① LEISURE AND LOUNGE POOL              | ⑫ FEMALE WELLNESS CORNER   |
| ② BAJA SHELF                           | ⑬ MALE WELLNESS CORNER     |
| ③ SUN LOUNGERS AREA                    | ⑭ YOUTH HUB                |
| ④ KIDS POOL                            | ⑮ LIFT LOBBY               |
| ⑤ BARBEQUE DECK                        | ⑯ LOBBY LOUNGE             |
| ⑥ CULTURE LOUNGE                       | ⑰ LOBBY RECEPTION          |
| ⑦ PANTRY/DINING                        | ⑱ LOBBY ENTRANCE           |
| ⑧ THE THEATRE                          | ⑲ MAIN ENTRANCE            |
| ⑨ FITNESS STUDIO                       | ⑳ MOVE-IN TRUCK ZONE       |
| ⑩ HOT YOGA STUDIO                      | ㉑ VEHICLE ENTRANCE/EXIT    |
| ⑪ BATHROOM FOR PEOPLE OF DETERMINATION | ㉒ ACCESS TO PARKING LEVELS |



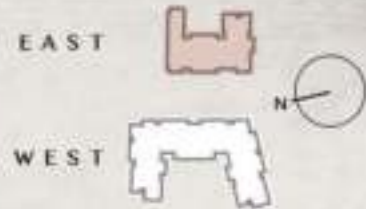
**WEST  
SECOND FLOOR  
AMENITIES PLAN**

- |                           |  |
|---------------------------|--|
| ① LEISURE AND LOUNGE POOL | ②① LOBBY ENTRANCE                      |
| ② BAJA SHELF              | ②② MAIN ENTRANCE                       |
| ③ SUN LOUNGERS AREA       | ②③ FITNESS STUDIO                      |
| ④ CABANAS                 | ②④ HOT YOGA STUDIO                     |
| ⑤ OUTDOOR SHOWER          | ②⑤ OUTDOOR FITNESS AREA                |
| ⑥ COURTYARD               | ②⑥ MALE WELLNESS CORNER                |
| ⑦ KIDS POOL               | ②⑦ FEMALE WELLNESS CORNER              |
| ⑧ BARBEQUE DECK           | ②⑧ PARKING FOR PEOPLE OF DETERMINATION |
| ⑨ OUTDOOR KIDS PLAY AREA  | ②⑨ SERVICE LIFT                        |
| ⑩ OUTDOOR TERRACE         | ②⑩ MOVE-IN TRUCK ZONE                  |
| ⑪ ACCESS TO COURTYARD     | ③① VEHICLE ENTRANCE/EXIT               |
| ⑫ LIFT LOBBY              | ③② ACCESS TO PARKING LEVELS            |
| ⑬ CULTURE LOUNGE          |  |
| ⑭ THE THEATRE             |  |
| ⑮ GAMES CORNER            |  |
| ⑯ YOUTH HUB               |  |
| ⑰ MULTIPURPOSE TABLE      |  |
| ⑱ LOBBY LOUNGE            |  |
| ⑲ LOBBY RECEPTION         |  |



**EAST  
ART CLUB  
AMENITIES PLAN**

- ① ROOFTOP BAR
- ② WORKSHOP CORNER
- ③ OUTDOOR LOUNGE & VIEWING DECK
- ④ SUNKEN SEATING
- ⑤ ARTS & PERFORMANCES STAGE
- ⑥ LIFT LOBBY
- ⑦ WASHROOM



**WEST**  
**ART CLUB**  
AMENITIES PLAN

- ① ROOFTOP BAR
- ② WORKSHOP CORNER
- ③ OUTDOOR LOUNGE & VIEWING DECK
- ④ SUNKEN SEATING
- ⑤ ARTS & PERFORMANCES STAGE
- ⑥ LIFT LOBBY
- ⑦ WASHROOM





EAST  
FLOOR PLANS

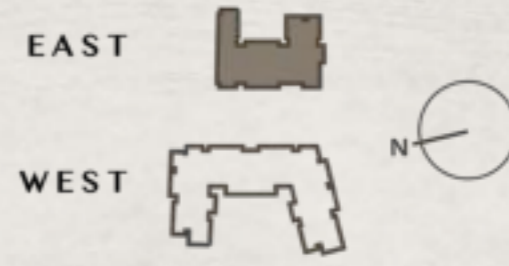




3<sup>RD</sup> - 10<sup>TH</sup>  
FLOOR PLAN

- STUDIO
- 1 BEDROOM
- 2 BEDROOM
- 3 BEDROOM

**STUDIO**  
**TYPE A**




---

Internal Living Area	:	<b>379.54 Sq. Ft</b>
Outdoor Living Area	:	<b>50.48 Sq. Ft</b>
Total Living Area	:	<b>430.02 Sq. Ft</b>

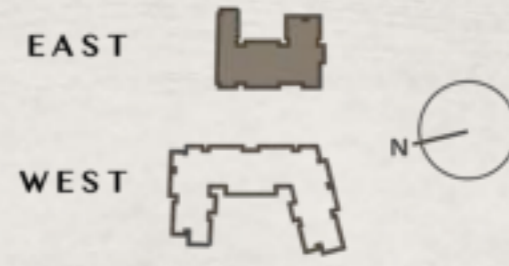
**2<sup>nd</sup> Floor:**



**3<sup>rd</sup> - 10<sup>th</sup> Floor:**



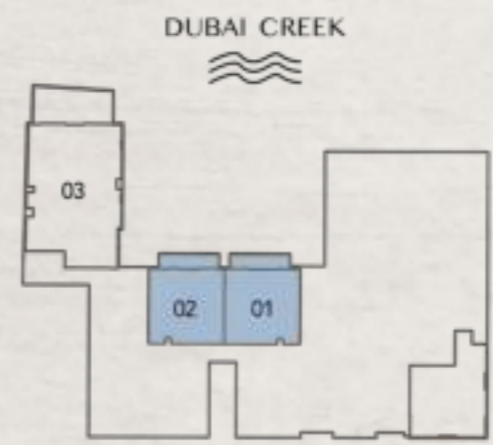
**1 BEDROOM  
TYPE A**




---

Internal Living Area	:	<b>758.64 Sq. Ft</b>
Outdoor Living Area	:	<b>130.67 Sq. Ft</b>
Total Living Area	:	<b>889.31 Sq. Ft</b>

**2<sup>nd</sup> Floor:**



**3<sup>rd</sup> - 10<sup>th</sup> Floor:**



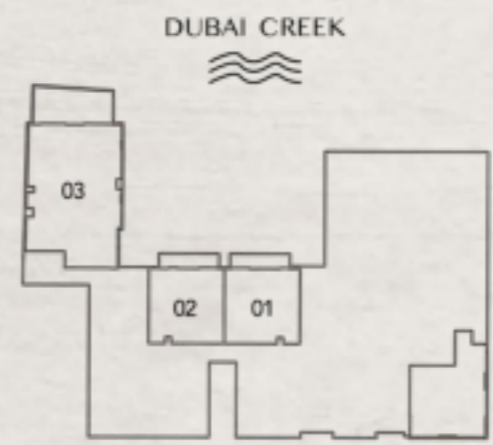
**1 BEDROOM  
TYPE B**




---

Internal Living Area	:	<b>857.24 Sq. Ft</b>
Outdoor Living Area	:	<b>102.58 Sq. Ft</b>
Total Living Area	:	<b>959.82 Sq. Ft</b>

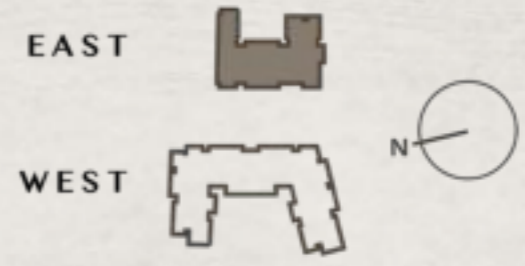
**2<sup>nd</sup> Floor:**



**3<sup>rd</sup> - 10<sup>th</sup> Floor:**



**1 BEDROOM  
TYPE C**

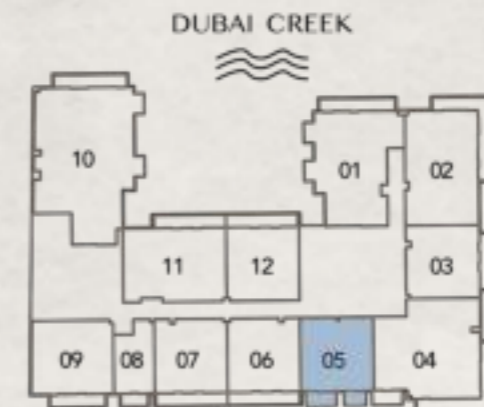


Internal Living Area : 762.73 Sq. Ft  
 Outdoor Living Area : 105.81 Sq. Ft  
 Total Living Area : 868.54 Sq. Ft

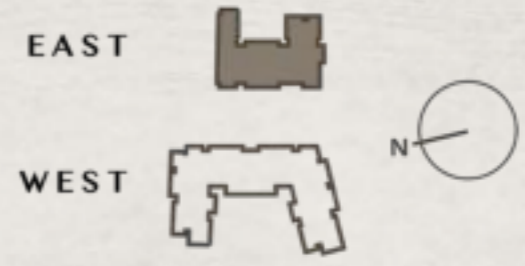
**2<sup>nd</sup> Floor:**



**3<sup>rd</sup> - 10<sup>th</sup> Floor:**

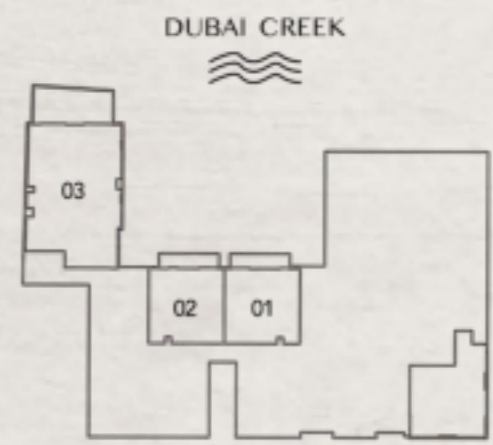


**2 BEDROOM  
TYPE A**



Internal Living Area	:	<b>1210.19 Sq. Ft</b>
Outdoor Living Area	:	<b>240.36 Sq. Ft</b>
Total Living Area	:	<b>1450.54 Sq. Ft</b>

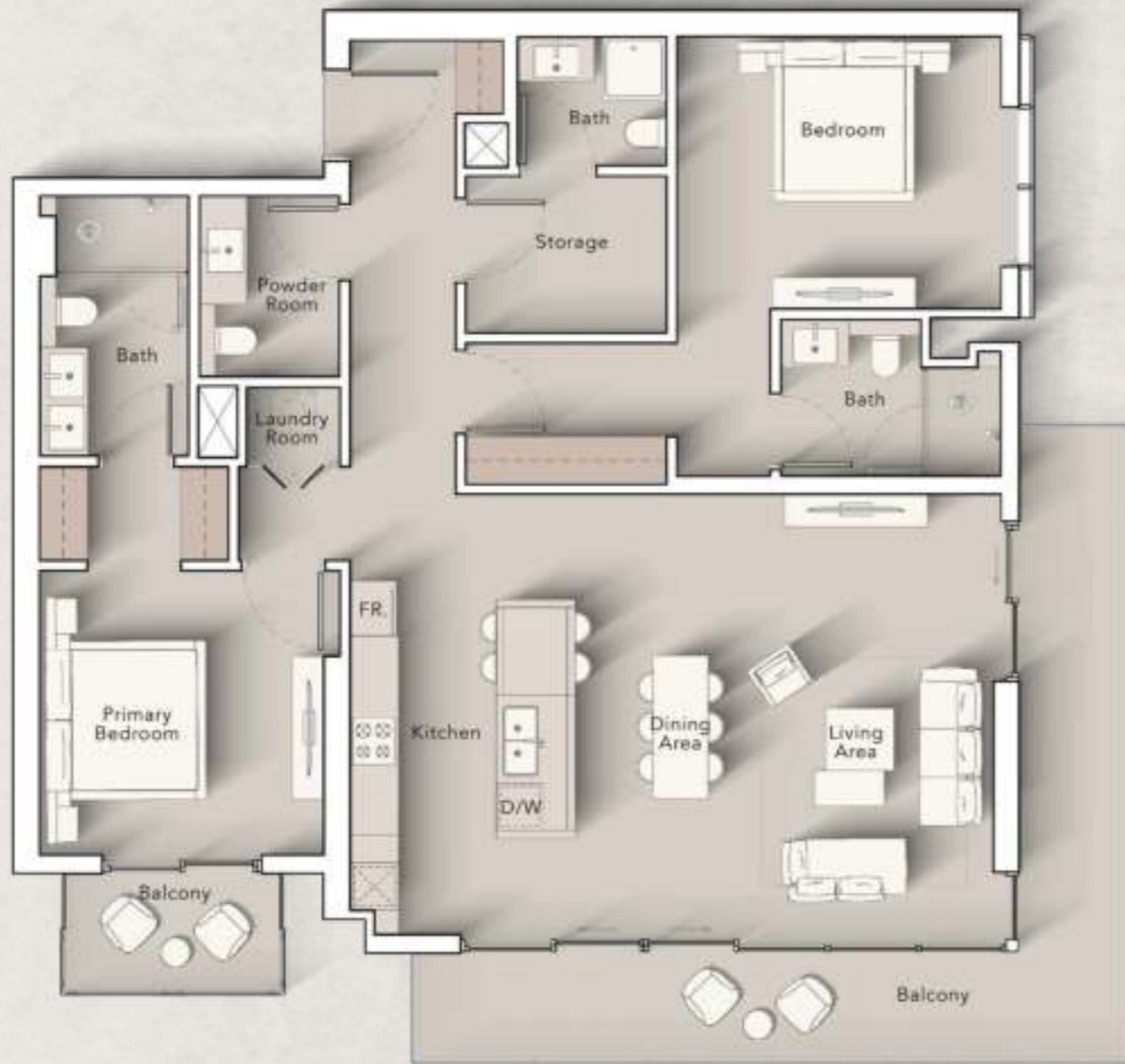
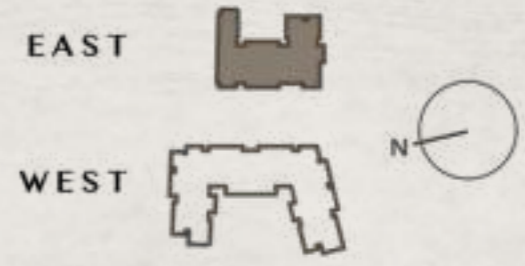
**2<sup>nd</sup> Floor:**



**3<sup>rd</sup> - 10<sup>th</sup> Floor:**

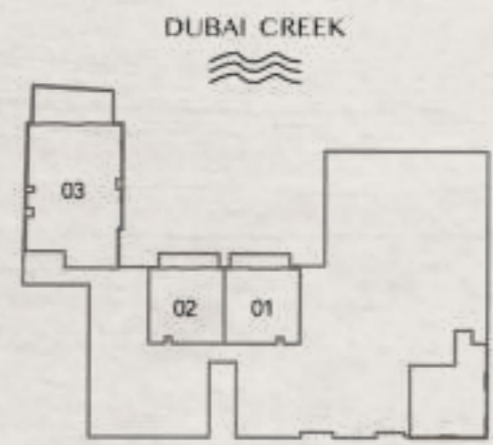


**2 BEDROOM  
TYPE B**



Internal Living Area : 1396.83 Sq. Ft  
 Outdoor Living Area : 295.58 Sq. Ft  
 Total Living Area : 1692.41 Sq. Ft

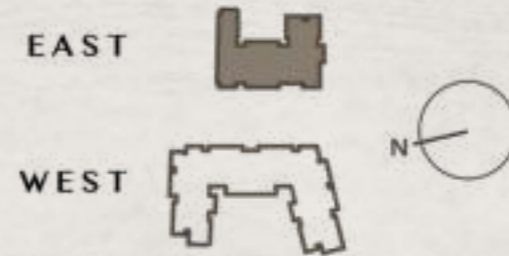
**2<sup>nd</sup> Floor:**



**3<sup>rd</sup> - 10<sup>th</sup> Floor:**

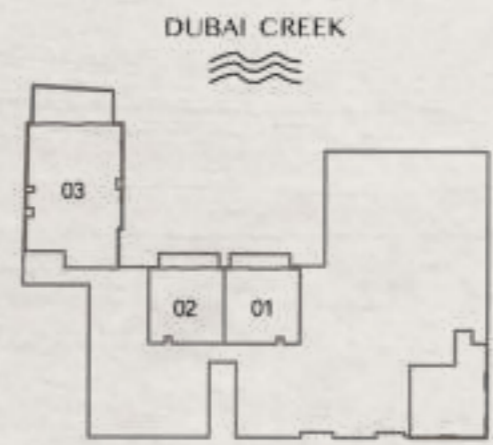


**2 BEDROOM  
TYPE C**



Internal Living Area : 1292.53 Sq. Ft  
 Outdoor Living Area : 141.01 Sq. Ft  
 Total Living Area : 1433.54 Sq. Ft

**2<sup>nd</sup> Floor:**



**3<sup>rd</sup> - 10<sup>th</sup> Floor:**

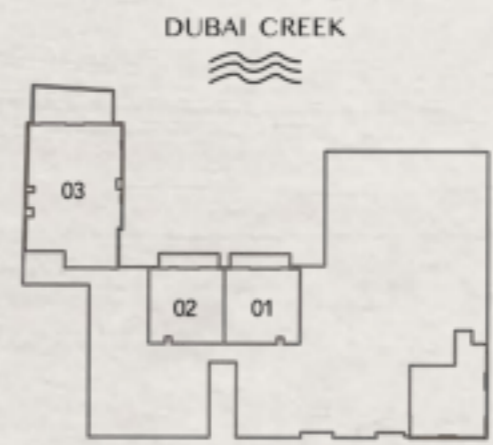


**2 BEDROOM  
TYPE D**



Internal Living Area : 1080.48 Sq. Ft  
 Outdoor Living Area : 130.67 Sq. Ft  
 Total Living Area : 1211.16 Sq. Ft

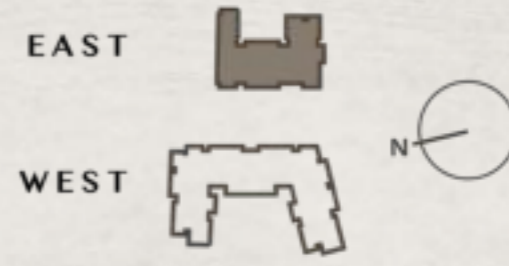
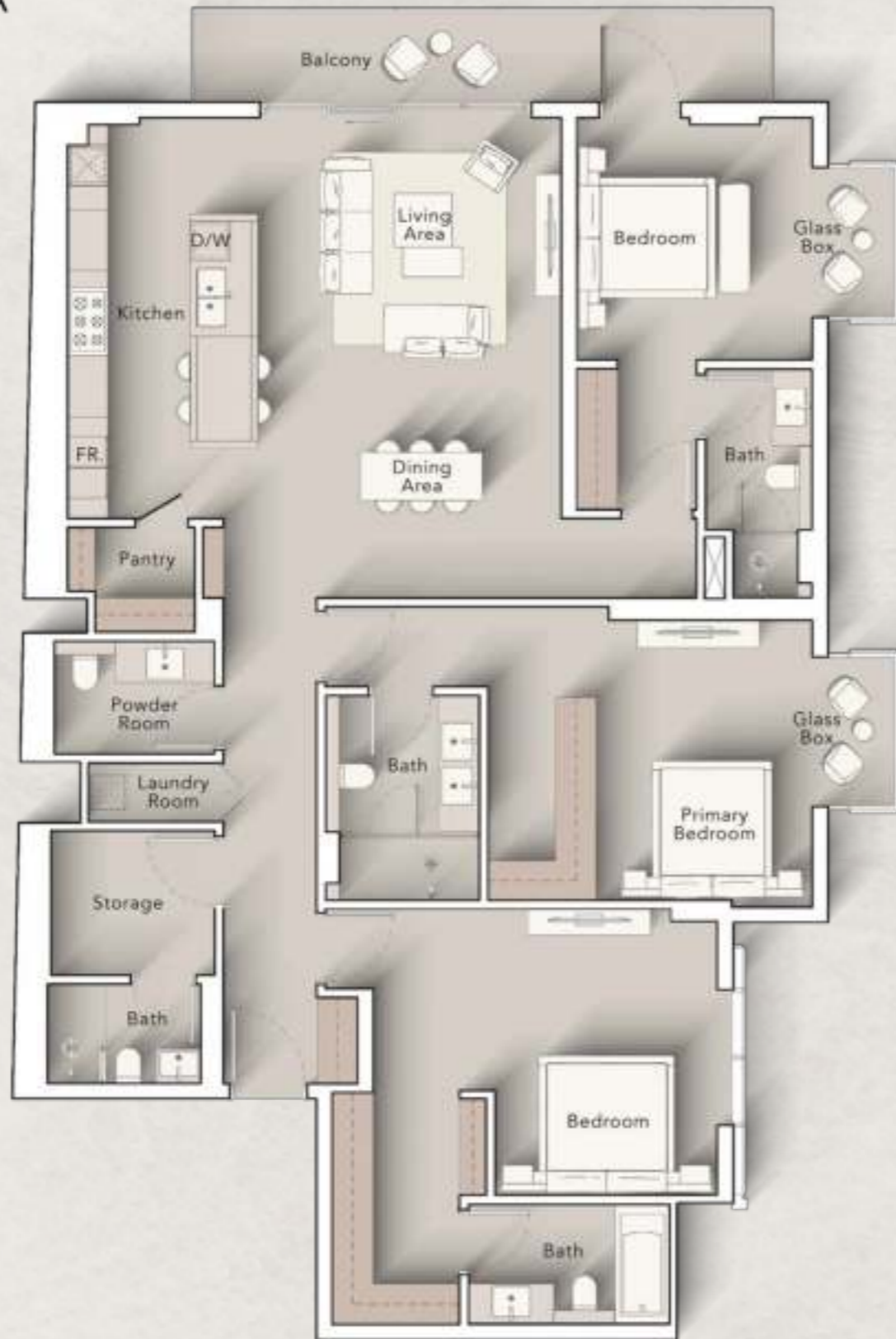
**2<sup>nd</sup> Floor:**



**3<sup>rd</sup> - 10<sup>th</sup> Floor:**

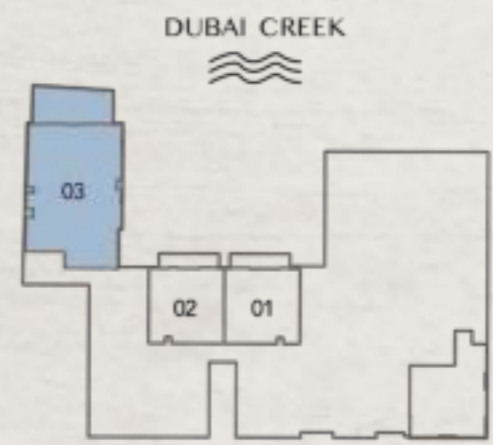


# 3 BEDROOM TYPE A



Internal Living Area	:	<b>2011.99 Sq. Ft</b>
Outdoor Living Area	:	<b>135.84 Sq. Ft</b>
Total Living Area	:	<b>2147.83 Sq. Ft</b>

### 2<sup>nd</sup> Floor:



### 3<sup>rd</sup> - 10<sup>th</sup> Floor:



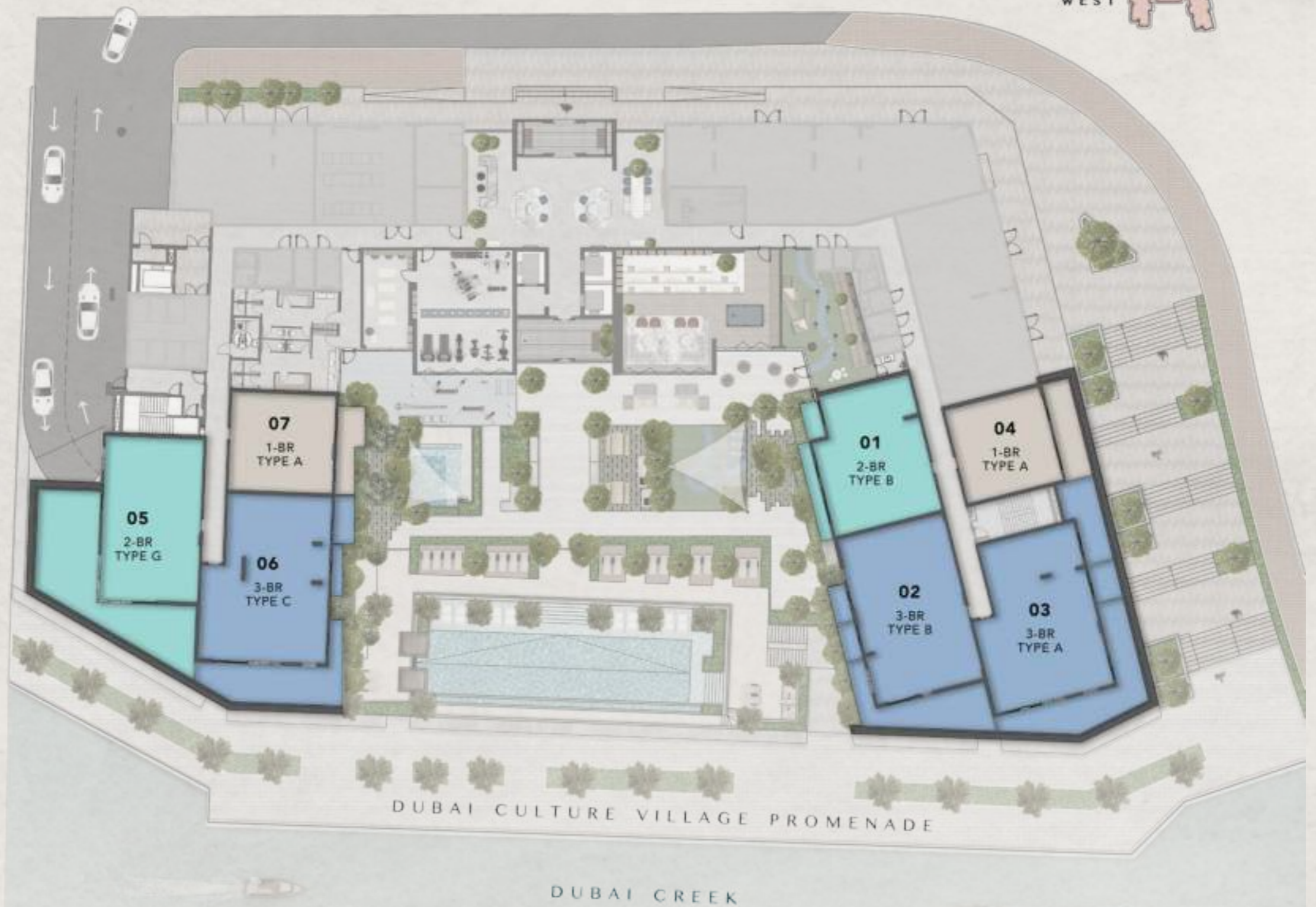


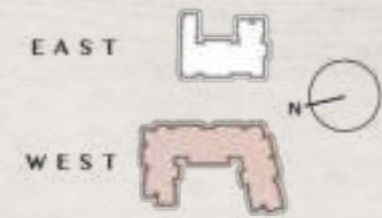
WEST  
FLOOR PLANS



### 2<sup>ND</sup> FLOOR PLAN

- 1 BEDROOM
- 2 BEDROOM
- 3 BEDROOM





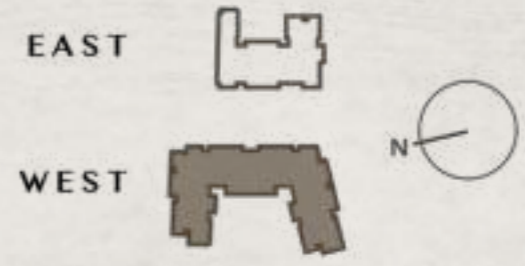
### 3<sup>RD</sup> - 10<sup>TH</sup> FLOOR PLAN

-  STUDIO
-  1 BEDROOM
-  2 BEDROOM
-  3 BEDROOM

DUBAI CULTURE VILLAGE PROMENADE

DUBAI CREEK

**STUDIO  
TYPE A**




---

Internal Living Area	:	<b>440.67 Sq. Ft</b>
Outdoor Living Area	:	<b>44.78 Sq. Ft</b>
Total Living Area	:	<b>485.45 Sq. Ft</b>

**2<sup>nd</sup> Floor:**



**3<sup>rd</sup> - 10<sup>th</sup> Floor:**



**1 BEDROOM  
TYPE A**




---

Internal Living Area	:	<b>763.27 Sq. Ft</b>
Outdoor Living Area	:	<b>131.32 Sq. Ft</b>
Total Living Area	:	<b>894.59 Sq. Ft</b>

**2<sup>nd</sup> Floor:**



**3<sup>rd</sup> - 10<sup>th</sup> Floor:**



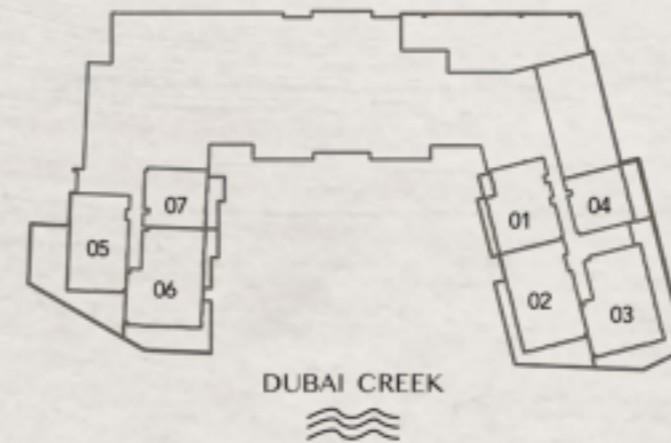
**1 BEDROOM  
TYPE B**




---

Internal Living Area	:	<b>753.80 Sq. Ft</b>
Outdoor Living Area	:	<b>93.54 Sq. Ft</b>
Total Living Area	:	<b>847.34 Sq. Ft</b>

**2<sup>nd</sup> Floor:**



**3<sup>rd</sup> - 10<sup>th</sup> Floor:**



**2 BEDROOM  
TYPE A**



Internal Living Area : 1202.76 Sq. Ft  
 Outdoor Living Area : 154.79 Sq. Ft  
 Total Living Area : 1357.54 Sq. Ft

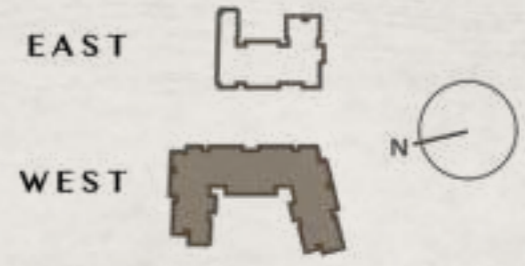
**2<sup>nd</sup> Floor:**



**3<sup>rd</sup> - 10<sup>th</sup> Floor:**

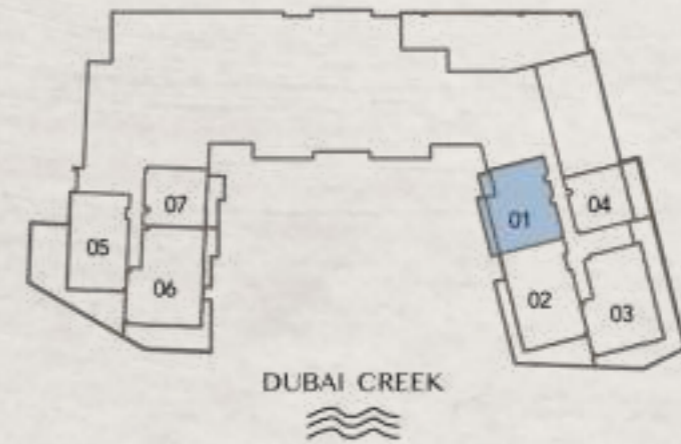


**2 BEDROOM  
TYPE B**



Internal Living Area : 1152.71 Sq. Ft  
 Outdoor Living Area : 180.08 Sq. Ft  
 Total Living Area : 1332.79 Sq. Ft

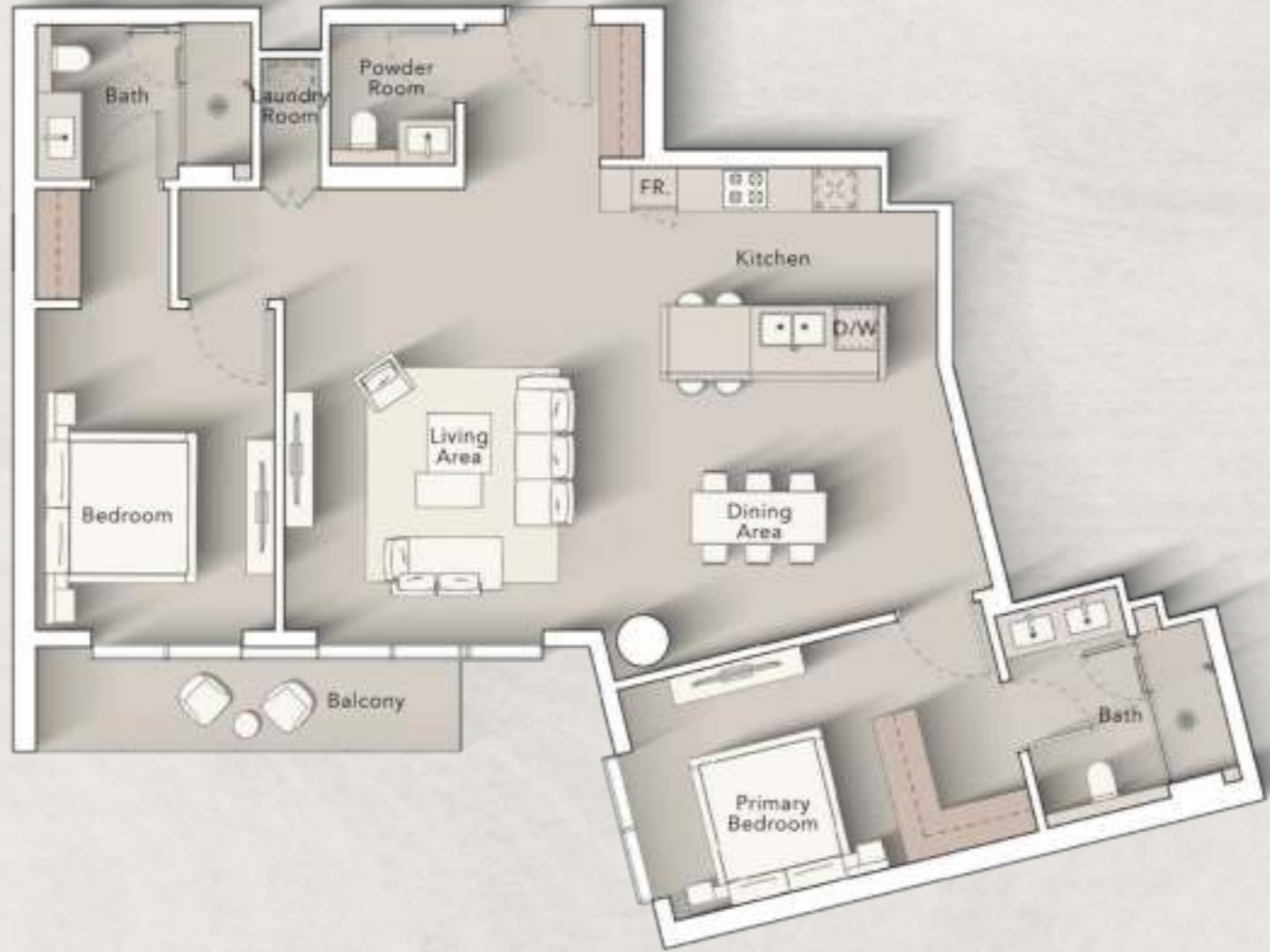
**2<sup>nd</sup> Floor:**



**3<sup>rd</sup> - 10<sup>th</sup> Floor:**



**2 BEDROOM  
TYPE C**



Internal Living Area : 1324.07 Sq. Ft  
 Outdoor Living Area : 81.91 Sq. Ft  
 Total Living Area : 1405.98 Sq. Ft

**2<sup>nd</sup> Floor:**



**3<sup>rd</sup> - 10<sup>th</sup> Floor:**



**2 BEDROOM  
TYPE D**



Internal Living Area : 1121.06 Sq. Ft  
 Outdoor Living Area : 208.82 Sq. Ft  
 Total Living Area : 1329.88 Sq. Ft

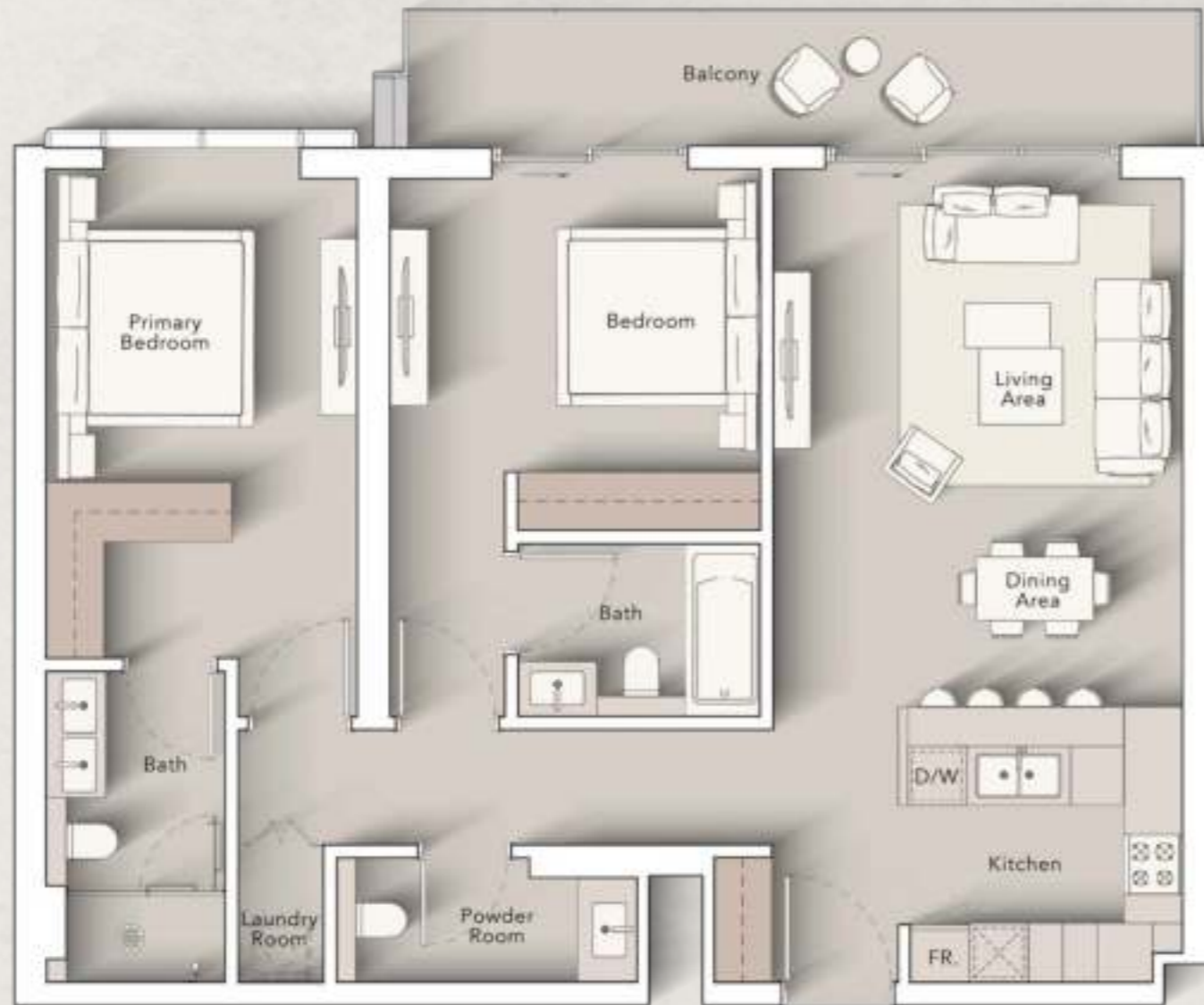
**2<sup>nd</sup> Floor:**



**3<sup>rd</sup> - 10<sup>th</sup> Floor:**



**2 BEDROOM  
TYPE E**



Internal Living Area : 1084.25 Sq. Ft  
 Outdoor Living Area : 131.75 Sq. Ft  
 Total Living Area : 1216.00 Sq. Ft

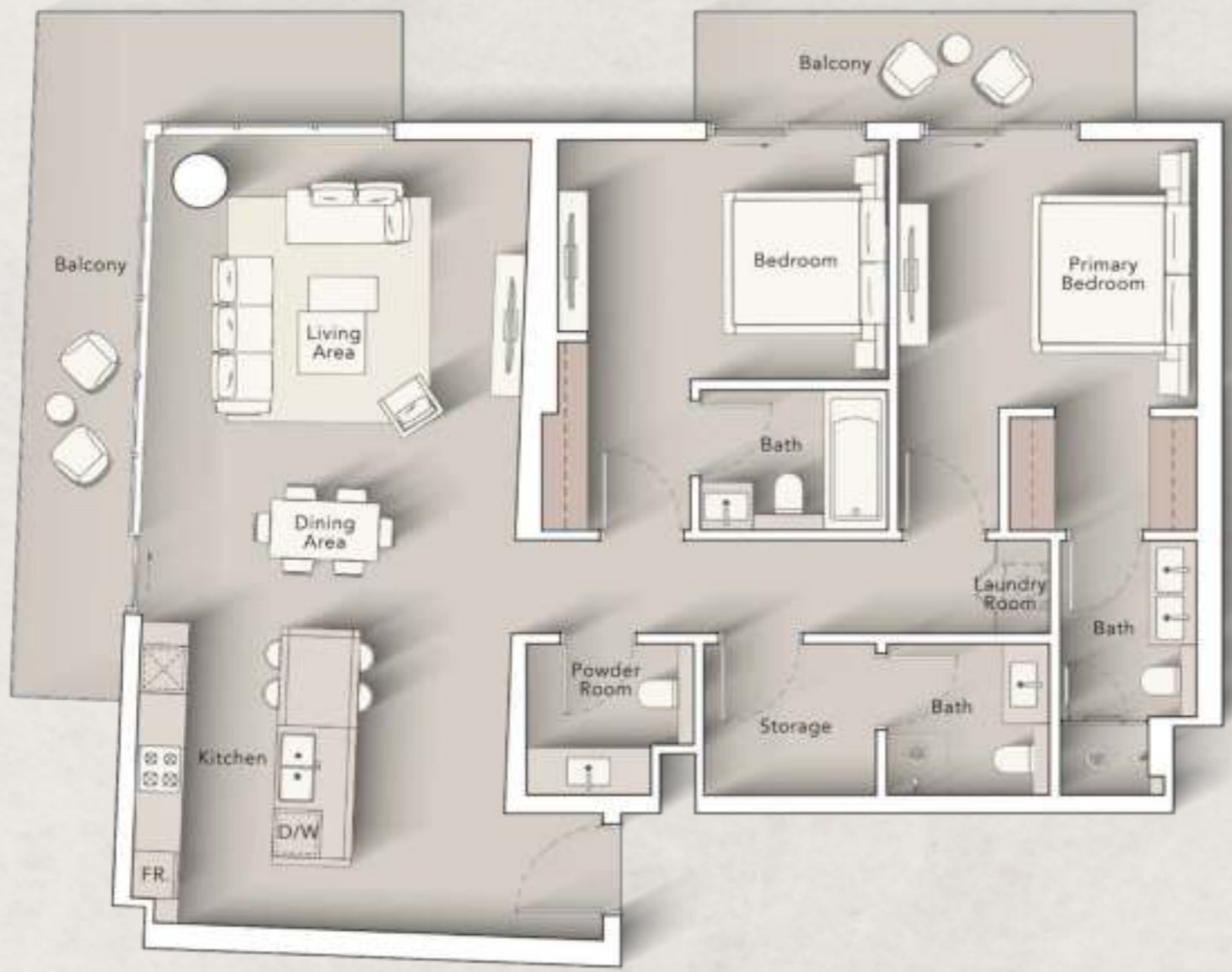
**2<sup>nd</sup> Floor:**



**3<sup>rd</sup> - 10<sup>th</sup> Floor:**



**2 BEDROOM  
TYPE F**



Internal Living Area : 1349.47 Sq. Ft  
 Outdoor Living Area : 273.83 Sq. Ft  
 Total Living Area : 1623.31 Sq. Ft

**2<sup>nd</sup> Floor:**



**3<sup>rd</sup> - 10<sup>th</sup> Floor:**



**2 BEDROOM  
TYPE G**



Internal Living Area : 1279.51 Sq. Ft  
 Outdoor Living Area : 254.78 Sq. Ft  
 Total Living Area : 1534.29 Sq. Ft

**2<sup>nd</sup> Floor:**



**3<sup>rd</sup> - 10<sup>th</sup> Floor:**



**2 BEDROOM  
TYPE H**



Internal Living Area : 1171.33 Sq. Ft  
 Outdoor Living Area : 98.38 Sq. Ft  
 Total Living Area : 1269.71 Sq. Ft

**2<sup>nd</sup> Floor:**



**3<sup>rd</sup> - 10<sup>th</sup> Floor:**

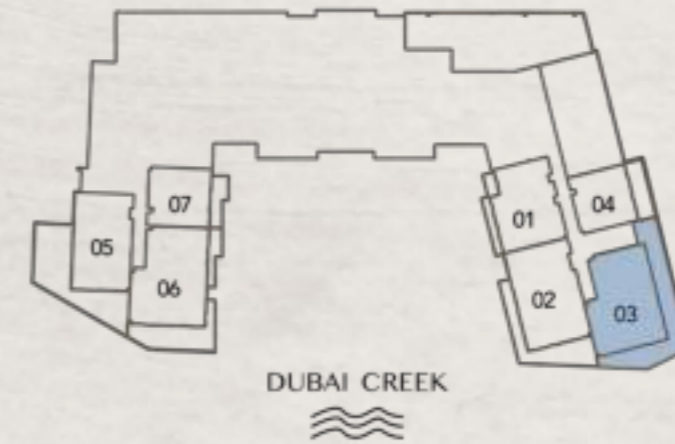


### 3 BEDROOM TYPE A



Internal Living Area : 1525.78 Sq. Ft  
 Outdoor Living Area : 341.22 Sq. Ft  
 Total Living Area : 1867.00 Sq. Ft

#### 2<sup>nd</sup> Floor:



#### 3<sup>rd</sup> - 10<sup>th</sup> Floor:



**3 BEDROOM  
TYPE B**



Internal Living Area : 1563.14 Sq. Ft  
 Outdoor Living Area : 235.41 Sq. Ft  
 Total Living Area : 1798.54 Sq. Ft

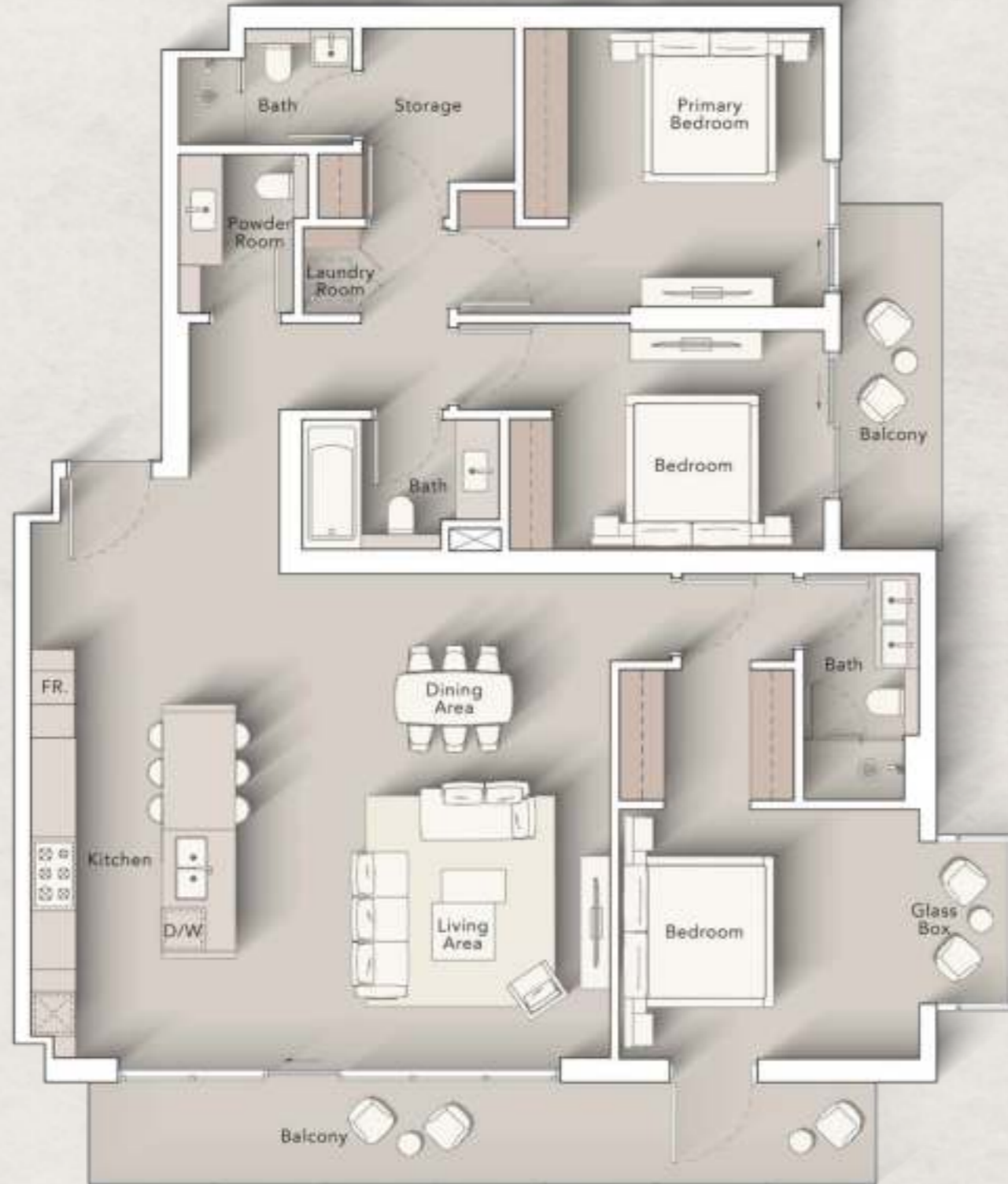
**2<sup>nd</sup> Floor:**



**3<sup>rd</sup> - 10<sup>th</sup> Floor:**



# 3 BEDROOM TYPE C



Internal Living Area : 1682.61 Sq. Ft  
 Outdoor Living Area : 248.75 Sq. Ft  
 Total Living Area : 1931.37 Sq. Ft

## 2<sup>nd</sup> Floor:



## 3<sup>rd</sup> - 10<sup>th</sup> Floor:



**3 BEDROOM  
TYPE D**



Internal Living Area : 1778.84 Sq. Ft  
 Outdoor Living Area : 99.89 Sq. Ft  
 Total Living Area : 1878.73 Sq. Ft

**2<sup>nd</sup> Floor:**



**3<sup>rd</sup> - 10<sup>th</sup> Floor:**





CONTACT US

Mobile: +971 52 554 9435

Email: [info@propjunction.org](mailto:info@propjunction.org)

[www.propjunction.ae/projects/ellington-art-bay](http://www.propjunction.ae/projects/ellington-art-bay)

ADDRESS

B301, Metha plaza Building,  
Oud Metha, Dubai